

CSD

Early Release
Days

Early Release Days

Three half
days
16 - 17

Summer
DLT
Retreat

DLT
Monthly
Planning
Meetings

CSD PreK-5 Report:
Early Release Days
2016-17

Overview of Early Release time

PreK-5 had three early release days this year: September 20, February 16, and April 6



Technology Integration

Math Understanding



Vertical Teams



How did we use the
early release time?

Meeting in VERTICAL TEAMS

- Vertical Teams are made up of teachers from each grade level, PreK-5.
- Goals of Vertical Teaming:
 - **Align** instructional practices in a specific content area
 - **Build** student knowledge, skills, and concepts **sequentially**
 - **Decrease** content repetition, **maximize** instructional time for students

Content Focus: MATH UNDERSTANDING

Goals of professional learning:

- Foster a deeper understanding of mathematics
- Accomplish this through conversations and explaining thinking

Math Talk Moves

	Revoicing "So you're saying that _____ Do I have that right?"
	Repeating "Can you restate or rephrase what _____ just said?"
	Reasoning "Do you agree or disagree, and why?"
	Adding On "Would someone like to add on?"
	Waiting "Take your time...we'll wait..."
	Turn & Talk "Partner turn and talk or think-pair-share"

Summary Bible of Productive Talk Moves from Classroom Discourse in Math: A Teacher's Guide to Using Talk Moves to Support the Common Core and More, Grade K-6 by Suzanne H. Chapin, Catherine O'Connor, and Nancy Canavan Anderson. Copyright © 2013 by Scholastic Inc. All rights reserved. Item # 594982.

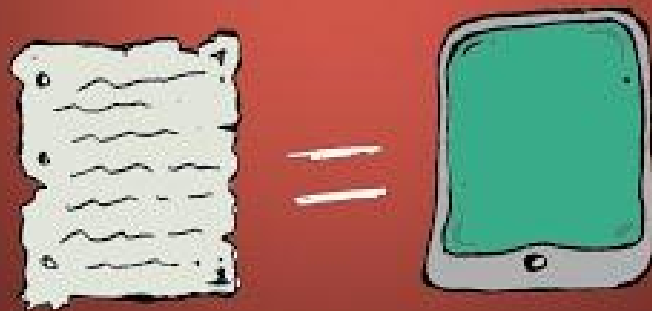
 Math Solutions. | mathsolutions.com

Content Focus:
TECHNOLOGY INTEGRATION

Goals of professional learning:

- Learn new technology applications to use with students
- Understand how to use technology to TRANSFORM learning
- Use Vertical Teams to create a sequential plan for student learning and use of technology

THE SAMR MODEL



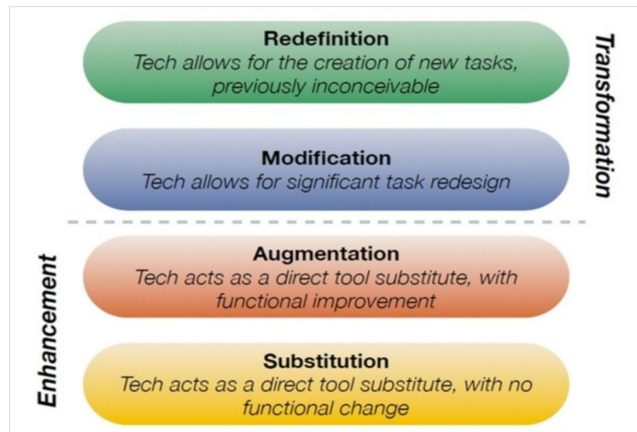
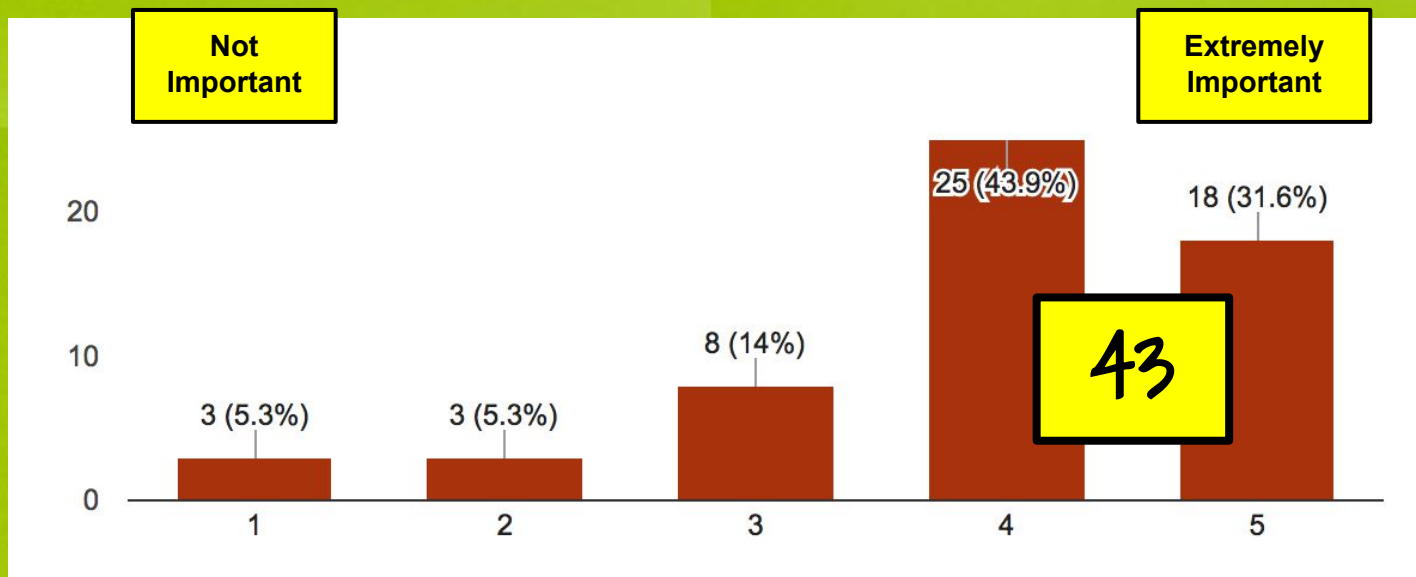


Image the creation of Dr. Ruben Puentedura, Ph.D. <http://www.hippasus.com/rpweblog/>



Were early release days effective for professional learning?

How important is it to include early release days for professional learning in the 2017-2018 calendar?



Frequent, consistent learning sessions



"The half-day release days have been well-timed so that I can take what we have discussed/learned and try it in my classroom. Having a follow-up soon after allows time for reflection on those new activities/learning."



"The (professional learning) days are close enough together to see the continuum."

"It helped to have more PD embedded in the school year than at the beginning and the end."



Learn, use, reflect

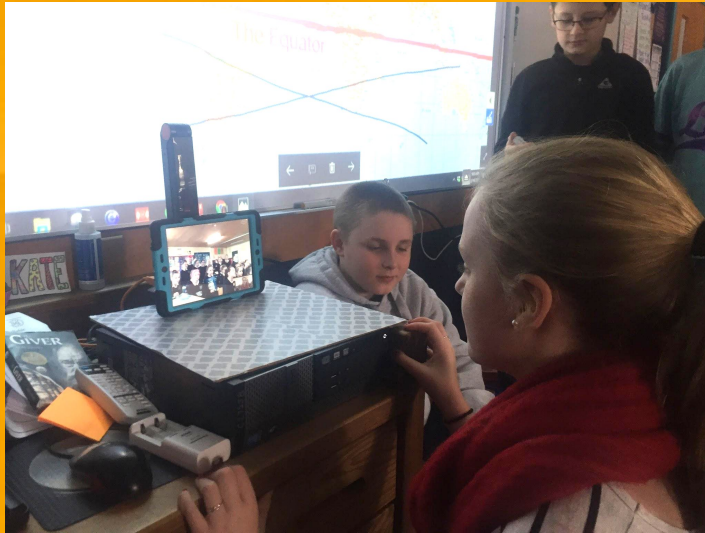


SeeSaw

[SeeSaw - Kindergarten
meth explanation](#)

[SeeSaw - Grade 2 student
explains her math thinking](#)

[SeeSaw - Kindergarten
student reads writing piece](#)



Mystery Skype

New applications in classrooms

Mystery Skype



New applications in classrooms

Coding



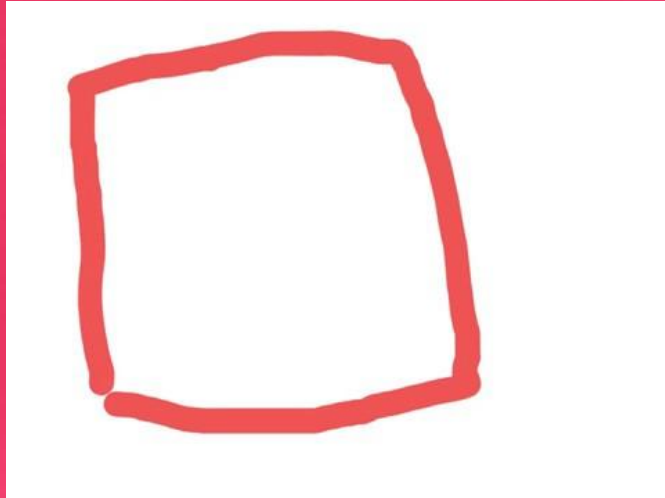
New applications in classrooms

Vertical teaming

"I like to see where students are coming from and where they are going - discussing the 'ladder' of learning."



"Vertical teaming allows us to how topics work on the continuum of grade levels."



KidBlog post using Explain Everything:

<https://kidblog.org/class/ms-laroses-2nd-grade7/posts/1gwh97k2fxdwof236o0308nt6>



Products of Vertical Teaming

Collaboration and Professional Growth

"Early release days give us an opportunity to work together and become a stronger collaborative team."



"Gives me more technology choices so I can differentiate for students."

"Great to share up-to-date information with knowledgeable colleagues."

Collaboration and Professional Growth



“

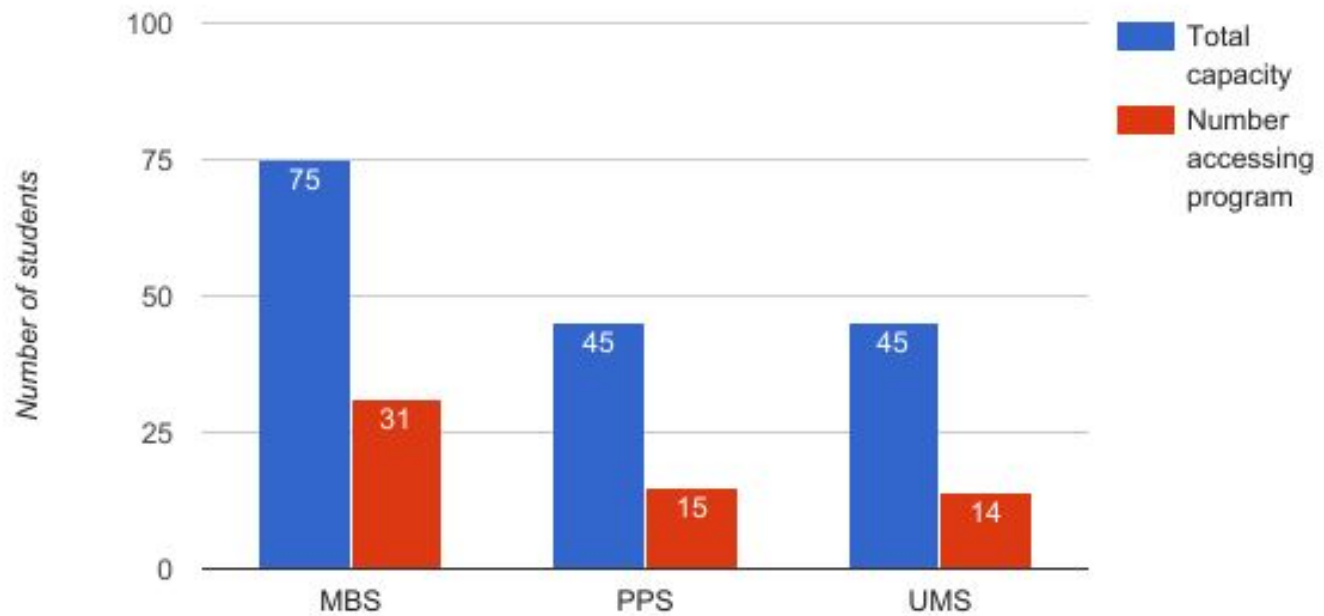
"I appreciated having time to get feedback from other teachers."

"Now I know which other teachers at my school are interested in similar topics as me.."

Partnership with Colchester Recreation

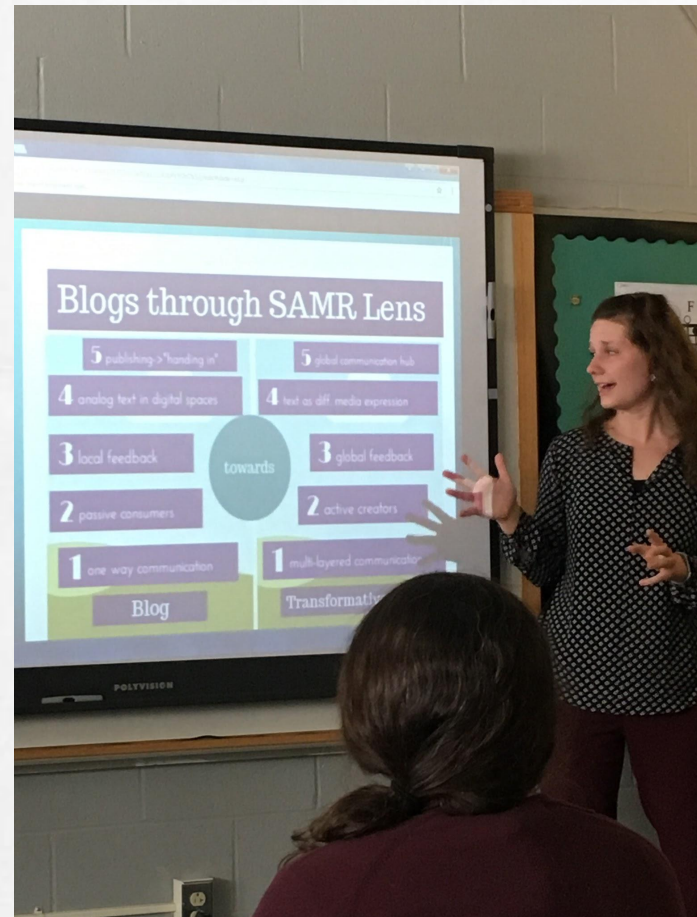


ACE Early Release Child Care, 2/16/17



Summary

- ▣ Shared professional learning PreK-5
- ▣ Immediate implementation and excitement
- ▣ A cycle of learning, application, and reflection
- ▣ Partnership with Recreation to provide childcare option
- ▣ Students were the direct beneficiaries!



Comparison Data

District	Student Days	Contracted InService Days	Additional PD Time Early Release / Late Arrival
Burlington	177	8	Weekly
Chitt Central (EHS)	177	9.5	NONE
Chitt East (MMU)	178	6	1X Monthly
Chitt South (CVU)	179	5	Weekly
<i>Colchester</i>	<i>176</i>	<i>8 (7*)</i>	<i>TBD (3)</i>
Milton	177	10	1X Annually
South Burlington	180	7	2X Monthly
Lamoille South (Stowe)	176	10	4X Annually
Winooski	177	9	1X Monthly

Next Steps



6-12
Presentation



CSD Proposal



Board
Decision



Any Questions?